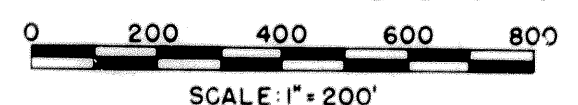


CENTER LINE SURVEY PLAT

GUE 40-8.93

JACKSON & CAMBRIDGE TWP'S
 U.S.M.L. No's 9,10,11,23,24,25,26 & 4TH 1/4 T.1 & T.2, R.3 U.S.M.L.
 GUERNSEY COUNTY



LIMITED ACCESS

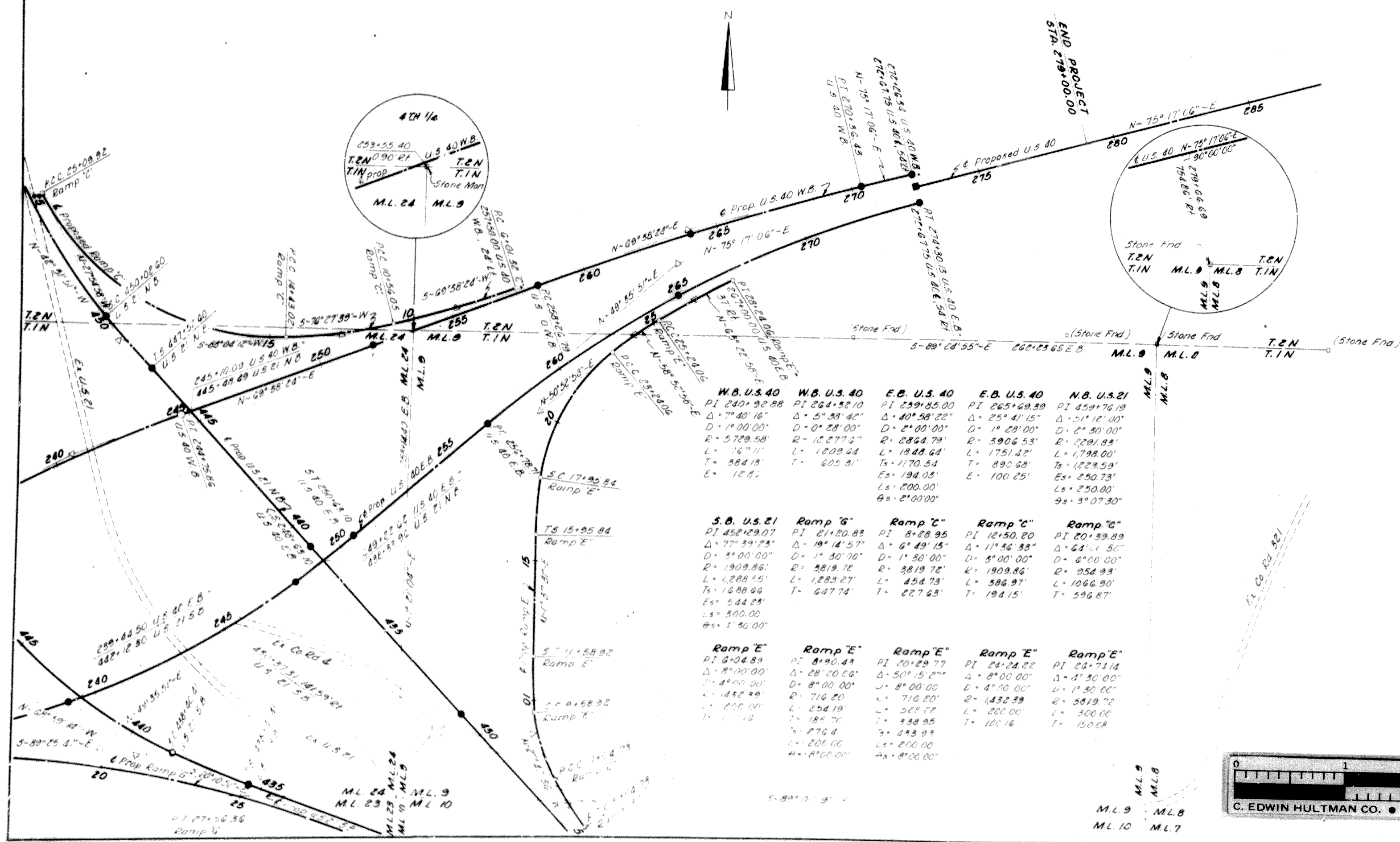
Received July 12 1962 at 11:20 AM
 Recorded July 13 1962
 Plat Book 11 Page 47
 Signed John W. Campbell
 Recorder, Guernsey County
 Fee: \$3.00

Note:
 This instrument prepared by the Ohio Department of
 Highways under the supervision of
 Signed

Registered Engineer No. 5334
 Registered Surveyor No. 2624
 Resident Division Deputy Director
 Date:

This improvement has been declared a Limited
 Access Highway from Station 195+00 to
 Station 279+00 by action of the Director of
 Highways and recorded in Volume 44, Page 263,
 of the Directors Journal Pursuant to law

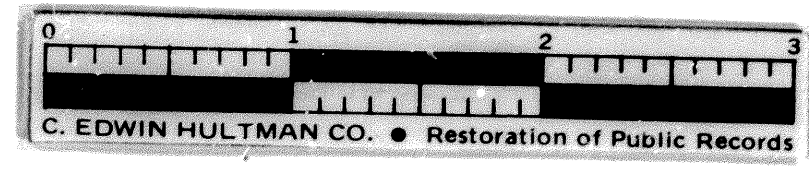
Note:
 This plat includes and supersedes parts of sheets and
 E of the Location Plan for GUE-21-5.90 as recorded in
 Plat Book 10, Page 48 of the Guernsey County Plat Records.



W.B. U.S. 40	W.B. U.S. 40	E.B. U.S. 40	E.B. U.S. 40	N.B. U.S. 21
PI 240+92.88	PI 264+52.10	PI 259+85.00	PI 265+69.99	PI 459+76.19
Δ = 7°40'16"	Δ = 5°38'42"	Δ = 40°58'22"	Δ = 25°41'15"	Δ = 51°12'00"
D = 1°00'00"	D = 0°28'00"	D = 2°00'00"	D = 1°28'00"	D = 2°30'00"
R = 5729.58'	R = 12,277.27'	R = 2864.79'	R = 5906.53'	R = 7291.85'
L = 16°11'	L = 1209.64'	L = 1948.64'	L = 1751.42'	L = 1798.00'
T = 384.13'	T = 605.91'	T = 1170.54'	T = 890.68'	T = 1223.59'
E = 12.85'	E = 194.05'	E = 100.25'	E = 250.73'	E = 250.00'
θ = 2°00'00"	θ = 2°00'00"	θ = 2°00'00"	θ = 3°07'30"	

S.B. U.S. 21	Ramp "G"	Ramp "C"	Ramp "C"	Ramp "C"
PI 452+29.07	PI 21+20.85	PI 8+28.95	PI 12+50.20	PI 20+39.89
Δ = 77°51'25"	Δ = 19°14'57"	Δ = 6°49'15"	Δ = 11°56'33"	Δ = 64°01'50"
D = 8°00'00"	D = 1°30'10"	D = 1°30'00"	D = 5°00'00"	D = 6°00'00"
R = 1909.86'	R = 3819.72'	R = 3819.72'	R = 1909.86'	R = 254.93'
L = 2289.55'	L = 1283.27'	L = 454.73'	L = 386.97'	L = 1066.90'
T = 1698.66'	T = 647.74'	T = 227.63'	T = 194.15'	T = 596.87'
E = 544.25'	E = 300.00'	E = 300.00'	E = 300.00'	E = 300.00'
θ = 1°30'00"				

Ramp "E"	Ramp "E"	Ramp "E"	Ramp "E"	Ramp "E"
PI 6+04.89	PI 8+90.43	PI 20+29.77	PI 24+24.22	PI 24+71.14
Δ = 8°00'00"	Δ = 28°20'06"	Δ = 50°15'27"	Δ = 8°00'00"	Δ = 4°30'00"
D = 4°00'00"	D = 8°00'00"	D = 8°00'00"	D = 4°00'00"	D = 1°30'00"
R = 1452.89'	R = 716.20'	R = 716.20'	R = 1432.39'	R = 5819.72'
L = 200.00'	L = 254.19'	L = 569.58'	L = 200.00'	L = 300.00'
T = 157.16'	T = 185.70'	T = 338.95'	T = 100.16'	T = 150.08'
E = 276.4'	E = 200.00'	E = 200.00'	E = 200.00'	E = 200.00'
θ = 8°00'00"	θ = 8°00'00"	θ = 8°00'00"	θ = 8°00'00"	θ = 8°00'00"



■ Monument Cap
 ● Monument Location Cap